

L-systems with Multiplication Operator and c-Entropy

S. Belyi, K. A. Makarov, and E. Tsekanovskii

ABSTRACT. In this note, we utilize the concepts of c-entropy and the dissipation coefficient in connection with canonical L-systems based on the multiplication (by a scalar) operator. Additionally, we examine the coupling of such L-systems and derive explicit formulas for the associated c-entropy and dissipation coefficient. In this context, we also introduce the concept of a skew-adjoint L-system and analyze its coupling with the original L-system.

CONTENTS

1. Introduction	1
2. Preliminaries	3
3. Bounded Donoghue classes	3
4. L-systems with multiplication operator	5
5. L-system coupling	8
6. c-Entropy and dissipation coefficient of an L-system	11
7. Skew-adjoint L-system with multiplication operator	14
8. Examples	17
References	19

1. Introduction

This paper is dedicated to the exploration of the relationships between various subclasses of Herglotz-Nevanlinna functions and their conservative realizations as impedance functions of L-system (see [1, 7, 6, 5, 3, 12]).

Recall the concept of a canonical L-system.

Let T be a bounded linear operator in a Hilbert space \mathcal{H} . Suppose, in addition, that E is another finite-dimensional Hilbert space, $\dim E < \infty$. By a *canonical L-system* we mean the array

$$(1) \quad \Theta = \begin{pmatrix} T & K & J \\ \mathcal{H} & & E \end{pmatrix},$$

where $K \in [E, \mathcal{H}]$, J is a self-adjoint isometry in E such that $\operatorname{Im} T = KJK^*$.

2020 *Mathematics Subject Classification.* Primary 47A10; Secondary 47N50, 81Q10.

Key words and phrases. L-system, transfer function, impedance function, Herglotz-Nevanlinna function, Donoghue class, c-entropy, dissipation coefficient, multiplication operator.

Recall that the operator-valued function

$$W_{\Theta}(z) = I - 2iK^*(T - zI)^{-1}KJ, \quad z \in \rho(T),$$

is called the *transfer function* of an L-system Θ , while

$$V_{\Theta}(z) = i[W_{\Theta}(z) + I]^{-1}[W_{\Theta}(z) - I]J = K^*(\operatorname{Re} T - zI)^{-1}K, \quad z \in \rho(T) \cap \mathbb{C}_{\pm},$$

is known as the *impedance function* of Θ . The formal definition of L-systems and their elements are presented in Section 2.

The main goal of this note is to apply the concepts of c-entropy and dissipation coefficient introduced in [4] and [3] to canonical L-systems based on the multiplication operator.

The paper is organized as follows.

Section 2 contains necessary information on the L-systems theory.

In Section 3, we review the formal definition and discuss the fundamental properties of regular and generalized Donoghue classes with a bounded, compactly supported representing measure. In particular, we emphasize the connection between the analytical theory of electrical circuits and the subclasses of rational functions belonging to the Donoghue classes (see Remark 1).

Sections 4–7 of the paper contain the main results.

Section 4 describes a detailed construction of a canonical L-system associated with the multiplication by a scalar operator. In this section, we also establish criteria for the impedance function of such an L-system to belong to the Donoghue classes with a bounded representing measure.

In Section 5, we revisit the concept of L-system coupling (see [8], [1]), and apply it to the canonical L-systems with the multiplication operators introduced in Section 4. We derive the explicit form of the coupling between two canonical L-systems (with multiplication operators) and give an independent proof of the Multiplication Theorem (see, e.g., [8, 14]) stating that the transfer function of this coupling is equal to the product of the transfer functions associated with the factor L-systems. As far as the corresponding impedance functions are concerned, we demonstrate that when the coupling of two L-systems, whose impedance functions belong to Donoghue classes, is formed, then the impedance of the resulting L-system also belongs to the Donoghue class. Thus, the invariance (persistence) of the Donoghue classes with respect to the coupling operation is established.

In Section 6, we revisit the definition of c-entropy and the dissipation coefficient, focusing specifically on their application to canonical L-systems with multiplication operators. We also obtain explicit representations for both c-entropy and the dissipation coefficient, and show that c-entropy is additive with respect to the coupling of two canonical L-systems (with multiplication operators).

In Section 7, we introduce the skew-adjoint L-systems associated with the canonical L-systems defined by multiplication operators and examine the properties of c-entropy and dissipation coefficient in this setting (also see Remark 15 for the “inductor-capacitor network” interpretation for the coupling between two elementary L-systems).

All the new results presented are summarized in Tables 1 and 2. The paper concludes with illustrative examples that demonstrate the constructions discussed.

2. Preliminaries

For a pair of Hilbert spaces $\mathcal{H}_1, \mathcal{H}_2$ denote by $[\mathcal{H}_1, \mathcal{H}_2]$ the set of all bounded linear operators from \mathcal{H}_1 to \mathcal{H}_2 .

Let T be a bounded linear operator in a Hilbert space \mathcal{H} , $K \in [E, \mathcal{H}]$, and J be a bounded, self-adjoint, and unitary operator in E , where E is another Hilbert space with $\dim E < \infty$. Let also

$$(2) \quad \text{Im } T = KJK^*.$$

By definition, the **Livšic canonical system** or simply **canonical L-system** is just the array

$$(3) \quad \Theta = \begin{pmatrix} T & K & J \\ \mathcal{H} & & E \end{pmatrix}.$$

The spaces \mathcal{H} and E here are called *state* and *input-output* spaces, and the operators T, K, J will be referred to as *main*, *channel*, and *directing* operators, respectively.

Notice that relation (2) implies

$$(4) \quad \text{Ran}(\text{Im } T) \subseteq \text{Ran}(K).$$

We associate with an L-system Θ two analytic functions, the **transfer function** of the L-system Θ

$$(5) \quad W_\Theta(z) = I - 2iK^*(T - zI)^{-1}KJ, \quad z \in \rho(T), \quad \text{the resolvent set,}$$

and also the **impedance function** given by the formula

$$(6) \quad V_\Theta(z) = K^*(\text{Re } T - zI)^{-1}K, \quad z \in \rho(\text{Re } T).$$

The transfer function $W_\Theta(z)$ of the L-system Θ and function $V_\Theta(z)$ of the form (6) are connected by the following relations valid for $\text{Im } z \neq 0, z \in \rho(T)$,

$$(7) \quad \begin{aligned} V_\Theta(z) &= i[W_\Theta(z) + I]^{-1}[W_\Theta(z) - I]J, \\ W_\Theta(z) &= (I + iV_\Theta(z)J)^{-1}(I - iV_\Theta(z)J). \end{aligned}$$

Recall that the impedance function $V_\Theta(z)$ of a canonical L-system admits the integral representation (see, e.g., [1, Section 5.5], [8])

$$(8) \quad V_\Theta(z) = \int_{\mathbb{R}} \frac{d\sigma(t)}{t - z},$$

where σ is an operator-valued bounded Borel measure in E with the compact support on \mathbb{R} .

As far as the inverse problem is concerned, we refer to [1, 7, 11] and references therein for the description of the class of all Herglotz-Nevanlinna functions that admit realizations as impedance functions of an L-system.

3. Bounded Donoghue classes

Denote by $\widehat{\mathcal{N}}$ the class of all scalar Herglotz-Nevanlinna functions $M(z)$ that admit the representation (8) where σ is a compactly supported bounded Borel measure such that

$$(9) \quad \int_{\mathbb{R}} \frac{t}{1 + t^2} d\sigma(t) = 0.$$

Observe that for a function $M(z) \in \widehat{\mathcal{N}}$ condition (9) implies

$$M(i) = \int_{\mathbb{R}} \frac{d\sigma(t)}{t-i} = \int_{\mathbb{R}} \frac{t}{t^2+1} d\sigma(t) + i \int_{\mathbb{R}} \frac{d\sigma(t)}{t^2+1} = i \int_{\mathbb{R}} \frac{d\sigma(t)}{t^2+1}.$$

Following the approach of [7, 5, 14, 15], given $0 \leq \kappa < 1$, denote by $\widehat{\mathfrak{M}}$, $\widehat{\mathfrak{M}}_{\kappa}$ and $\widehat{\mathfrak{M}}_{\kappa}^{-1}$ the subclass of $\widehat{\mathcal{N}}$ satisfying the additional requirement that

$$(10) \quad \int_{\mathbb{R}} \frac{d\sigma(t)}{1+t^2} = 1, \quad \text{equivalently,} \quad M(i) = i,$$

$$(11) \quad \int_{\mathbb{R}} \frac{d\sigma(t)}{1+t^2} = \frac{1-\kappa}{1+\kappa}, \quad \text{equivalently,} \quad M(i) = i \frac{1-\kappa}{1+\kappa},$$

and

$$(12) \quad \int_{\mathbb{R}} \frac{d\sigma(t)}{1+t^2} = \frac{1+\kappa}{1-\kappa}, \quad \text{equivalently,} \quad M(i) = i \frac{1+\kappa}{1-\kappa},$$

respectively. Clearly,

$$\widehat{\mathfrak{M}} = \widehat{\mathfrak{M}}_0 = \widehat{\mathfrak{M}}_0^{-1}.$$

It is easy to see that if $M(z)$ is an arbitrary function from the class $\widehat{\mathcal{N}}$ such that

$$(13) \quad \int_{\mathbb{R}} \frac{d\sigma(t)}{1+t^2} = a \quad \text{for some } a > 0,$$

then $M \in \widehat{\mathfrak{M}}$ if and only if $a = 1$.

The membership of $M \in \widehat{\mathcal{N}}$ in the other generalized Donoghue classes $\widehat{\mathfrak{M}}_{\kappa}$ and $\widehat{\mathfrak{M}}_{\kappa}^{-1}$ can also be described straightforwardly as follows:

if $a < 1$, then $M \in \widehat{\mathfrak{M}}_{\kappa}$ with

$$(14) \quad \kappa = \frac{1-a}{1+a},$$

and

if $a > 1$, then $M \in \widehat{\mathfrak{M}}_{\kappa}^{-1}$ with

$$(15) \quad \kappa = \frac{a-1}{1+a}.$$

REMARK 1. We note that rational functions from Donoghue classes taking purely imaginary values on the imaginary axis can be characterized as follows. Suppose that a rational function is given by

$$M(z) = -\frac{a_0}{z} + \sum_{k=1}^n a_k \frac{z}{b_k^2 - z^2}, \quad z \in \mathbb{C}_+,$$

where $a_0 \geq 0$ and $a_k > 0$, $b_k > 0$, $k = 1, \dots, n$. Clearly, the function $M(z)$ admits the representation (8)

$$M(z) = \int_{\mathbb{R}} \frac{d\sigma(t)}{t-z},$$

where $\sigma(dt)$ is a singular (atomic) measure supported at the points $-b_n, \dots, -b_1, 0, b_1, \dots, b_n$ with the weights $\frac{1}{2}a_n, \dots, \frac{1}{2}a_1, a_0, \frac{1}{2}a_1, \dots, \frac{1}{2}a_n$, respectively. In particular, condition (9) holds, that is,

$$\int_{\mathbb{R}} \frac{t}{1+t^2} d\sigma(t) = 0.$$

Moreover,

$$M(i) = i \left(a_0 + \sum_{k=1}^n \frac{a_k}{b_k^2 + 1} \right) \in i\mathbb{R}_+.$$

Therefore, the rational function $M(z)$ belongs to one of the Donoghue classes $\widehat{\mathfrak{M}}$, $\widehat{\mathfrak{M}}_{\kappa}$ and $\widehat{\mathfrak{M}}_{\kappa}^{-1}$ depending on whether

$$a = a_0 + \sum_{k=1}^n \frac{a_k}{b_k^2 + 1}$$

equals to, less than, or greater than one, respectively. Notice that the rational function

$$Z(p) = \frac{1}{i} M(ip) = \frac{a_0}{p} + \sum_{k=1}^n a_k \frac{p}{b_k^2 + p^2}$$

is a positive analytic function in the right half-plane, that is,

$$Z(p) + \overline{Z(p)} > 0, \quad \operatorname{Re}(p) > 0,$$

takes real values on the positive semi-axis and has purely imaginary values on the imaginary axis (for the definition of positive functions and their role in designing (synthesis of) electrical circuits, we refer to [10]).

Since

$$Z(p) = \frac{1}{\frac{1}{a_0}p} + \sum_{k=1}^n \frac{1}{(L_k p)^{-1} + \left(\frac{1}{C_k p}\right)^{-1}},$$

where

$$L_k = \frac{a_k}{b_k^2} \quad \text{and} \quad C_k = \frac{1}{a_k},$$

the function $Z(p)$ determines the impedance of a series connection of a capacitor $C_0 = \frac{1}{a_0}$ and n parallel LC-circuits with inductance L_k and capacitance C_k , $k = 1, \dots, n$. We remark that if $a_0 = 0$, the purely capacitive element of the circuit is absent in this case. Figure 1 shows an electric circuit consisting of a single capacitor and two LC-circuits connected in series.

4. L-systems with multiplication operator

Let \mathcal{H} be a one dimensional Hilbert space with an inner product (\cdot, \cdot) and a normalized basis vector $h_0 \in \mathcal{H}$, ($\|h_0\| = 1$). For a fixed number $\lambda_0 \in \mathbb{C}$ with $\operatorname{Im} \lambda_0 > 0$ we introduce (see also [8]) a linear operator

$$(16) \quad Th = \lambda_0 h, \quad h \in \mathcal{H}.$$

Clearly,

$$T^*h = \bar{\lambda}_0 h, \quad \operatorname{Im} Th = \operatorname{Im} \lambda_0 h, \quad \text{and} \quad \operatorname{Re} Th = \operatorname{Re} \lambda_0 h, \quad \forall h \in \mathcal{H}.$$

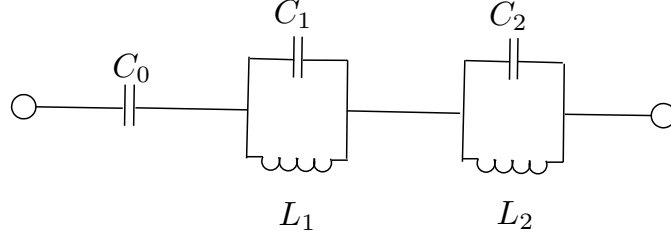


FIGURE 1. Three-stage Series Electrical Circuit

We are going to include T into a simple L-system Θ , i.e., construct an L-system where \mathcal{H} is the state space and T is the main operator (see [8], [3]). Let $K : \mathbb{C} \rightarrow \mathcal{H}$ be such that

$$(17) \quad Kc = (\sqrt{\operatorname{Im} \lambda_0} c)h_0, \quad \forall c \in \mathbb{C}.$$

Then, the adjoint operator $K^* : \mathcal{H} \rightarrow \mathbb{C}$ is

$$(18) \quad K^*h = (h, \sqrt{\operatorname{Im} \lambda_0} h_0), \quad \forall h \in \mathcal{H}.$$

Note that for an arbitrary element $h = C_h h_0 \in \mathcal{H}$, ($C_h \in \mathbb{C}$) formulas (17) and (18) imply

$$K^*h = K^*(C_h h_0) = C_h \sqrt{\operatorname{Im} \lambda_0} \quad \text{and} \quad K C_h = (\sqrt{\operatorname{Im} \lambda_0} h).$$

Therefore,

$$K K^*h = K(C_h \sqrt{\operatorname{Im} \lambda_0}) = (\operatorname{Im} \lambda_0)h.$$

Furthermore,

$$(19) \quad \operatorname{Im} Th = \operatorname{Im} \lambda_0 h = (\sqrt{\operatorname{Im} \lambda_0})(h, \sqrt{\operatorname{Im} \lambda_0} h_0)h_0 = K K^*h, \quad \forall h \in \mathcal{H}.$$

Thus, we can construct an L-system of the form

$$(20) \quad \Theta = \begin{pmatrix} T & K & 1 \\ \mathcal{H} & \mathbb{C} & \end{pmatrix},$$

where operators T and K are defined by (16) and (17), respectively. Taking into account that

$$(T - zI)^{-1} = \frac{1}{\lambda_0 - zI},$$

for the transfer function $W_\Theta(z)$ we have

$$(21) \quad W_\Theta(z) = I - 2iK^*(T - zI)^{-1}K = 1 - 2i \frac{\operatorname{Im} \lambda_0}{\lambda_0 - z} = \frac{\bar{\lambda}_0 - z}{\lambda_0 - z}.$$

The corresponding impedance function (6) is easily found to be given by

$$(22) \quad V_\Theta(z) = K^*(\operatorname{Re} T - zI)^{-1}K = \frac{\operatorname{Im} \lambda_0}{\operatorname{Re} \lambda_0 - z}.$$

By inspection, one confirms that $V_\Theta(z)$ is a Herglotz-Nevanlinna function.

The following result provides conditions on when the impedance function of the form (22) belongs to the Donoghue classes described in Section 3.

THEOREM 2. *Let Θ be an L-system (20) with the main operator T of the form (16). Then the impedance function $V_\Theta(z)$ belongs to the class:*

- (1) $\widehat{\mathfrak{M}}$ if and only if $\lambda_0 = i$;
- (2) $\widehat{\mathfrak{M}}_\kappa$ if and only if $\lambda_0 = ai$, $0 < a < 1$;
- (3) $\widehat{\mathfrak{M}}_\kappa^{-1}$ if and only if $\lambda_0 = ai$, $a > 1$.

PROOF. Let us prove (1) first. It is well known (see [1]) that the impedance function $V_\Theta(z)$ of any L-system is a Herglotz-Nevanlinna function and hence has integral representation (8). Consequently, $V_\Theta(z)$ of the form (22) belongs to the class $\widehat{\mathfrak{M}}$ if and only if $V_\Theta(i) = i$ (condition (9) is satisfied automatically). Using (22) yields

$$(23) \quad V_\Theta(i) = \frac{\operatorname{Im} \lambda_0}{\operatorname{Re} \lambda_0 - i} = \frac{\operatorname{Im} \lambda_0 \cdot \operatorname{Re} \lambda_0 + i \operatorname{Im} \lambda_0}{(\operatorname{Re} \lambda_0)^2 + 1} = \frac{\operatorname{Im} \lambda_0 \cdot \operatorname{Re} \lambda_0}{(\operatorname{Re} \lambda_0)^2 + 1} + i \frac{\operatorname{Im} \lambda_0}{(\operatorname{Re} \lambda_0)^2 + 1}.$$

This expression on the right equals i if and only if $\operatorname{Re} \lambda_0 = 0$ and $\operatorname{Im} \lambda_0 = 1$, i.e., $\lambda_0 = i$. This proves (1).

In order to prove (2), we compare (23) to formulas (11), (12), and (13). This comparison yields that $V_\Theta(z)$ of the form (22) belongs to the class $\widehat{\mathfrak{M}}_\kappa$ if

$$V_\Theta(i) = ai = (\operatorname{Im} \lambda_0)i, \quad 0 < a = \operatorname{Im} \lambda_0 < 1.$$

Therefore, $V_\Theta(z) \in \widehat{\mathfrak{M}}_\kappa$ if and only if $\operatorname{Re} \lambda_0 = 0$ and $\operatorname{Im} \lambda_0 < 1$. Thus, $\lambda_0 = ai$, $0 < a < 1$. Also, in this case

$$(24) \quad \kappa = \frac{1 - \operatorname{Im} \lambda_0}{1 + \operatorname{Im} \lambda_0}.$$

Assertion (3) is proved similarly to (2) with an assumption that $a = \operatorname{Im} \lambda_0$ is greater than 1. Moreover, here we have $V_\Theta(z) \in \widehat{\mathfrak{M}}_\kappa^{-1}$ with

$$(25) \quad \kappa = \frac{\operatorname{Im} \lambda_0 - 1}{1 + \operatorname{Im} \lambda_0}.$$

□

λ_0	a	κ	Class
i	$a = 1$	$\kappa = 0$	$V_\Theta(z) \in \widehat{\mathfrak{M}}$
ai	$0 < a < 1$	$\kappa = \frac{1-a}{1+a}$	$V_\Theta(z) \in \widehat{\mathfrak{M}}_\kappa$
ai	$a > 1$	$\kappa = \frac{a-1}{1+a}$	$V_\Theta(z) \in \widehat{\mathfrak{M}}_\kappa^{-1}$

TABLE 1. Impedance function $V_\Theta(z)$

The results of Theorem 2 are summarized in Table 1.

5. L-system coupling

In this section, following [8] (see also [1] and [6]), we introduce the coupling of two L-systems with multiplication operator of the form (20).

Let (as above) \mathcal{H} be a one-dimensional Hilbert space with the inner product (\cdot, \cdot) and a normalized basis vector $h_0 \in \mathcal{H}$, ($\|h_0\| = 1$). Suppose, in addition, that T_1 and T_2 are multiplication operators in \mathcal{H} of the form (16) given by

$$(26) \quad T_1 h = \lambda_0 h \quad \text{and} \quad T_2 h = \mu_0 h, \quad h \in \mathcal{H}.$$

Consider two L-systems of the form (20) based on T_1 and T_2 , respectively,

$$(27) \quad \Theta_1 = \begin{pmatrix} T_1 & K_1 & 1 \\ \mathcal{H} & & \mathbb{C} \end{pmatrix} \quad \text{and} \quad \Theta_2 = \begin{pmatrix} T_2 & K_2 & 1 \\ \mathcal{H} & & \mathbb{C} \end{pmatrix},$$

where $K_1 : \mathbb{C} \rightarrow \mathcal{H}$ and $K_2 : \mathbb{C} \rightarrow \mathcal{H}$ are such that

$$(28) \quad K_1 c = (\sqrt{\operatorname{Im} \lambda_0} c) h_0, \quad \text{and} \quad K_2 c = (\sqrt{\operatorname{Im} \mu_0} c) h_0, \quad \forall c \in \mathbb{C}.$$

Recall (18) that the adjoint operators $K_1^* : \mathcal{H} \rightarrow \mathbb{C}$ and $K_2^* : \mathcal{H} \rightarrow \mathbb{C}$ are

$$(29) \quad K_1^* h = (h, \sqrt{\operatorname{Im} \lambda_0} h_0), \quad K_2^* h = (h, \sqrt{\operatorname{Im} \mu_0} h_0), \quad \forall h \in \mathcal{H}.$$

Define an operator \mathbf{T} acting on the Hilbert space $\mathcal{H} \oplus \mathcal{H}$ as

$$(30) \quad \begin{aligned} \mathbf{T} \begin{bmatrix} h_1 \\ h_2 \end{bmatrix} &= \begin{pmatrix} T_1 & 2iK_1K_2^* \\ 0 & T_2 \end{pmatrix} \begin{bmatrix} h_1 \\ h_2 \end{bmatrix} = \begin{bmatrix} T_1 h_1 + 2iK_1K_2^* h_2 \\ T_2 h_2 \end{bmatrix} \\ &= \begin{bmatrix} \lambda_0 h_1 + 2i\sqrt{(\operatorname{Im} \lambda_0) \cdot (\operatorname{Im} \mu_0)} h_2 \\ \mu_0 h_2 \end{bmatrix}, \quad \forall h_1, h_2 \in \mathcal{H}. \end{aligned}$$

Direct check reveals that

$$(31) \quad \begin{aligned} \mathbf{T}^* \begin{bmatrix} h_1 \\ h_2 \end{bmatrix} &= \begin{pmatrix} T_1^* & 0 \\ -2iK_2K_1^* & T_2^* \end{pmatrix} \begin{bmatrix} h_1 \\ h_2 \end{bmatrix} = \begin{bmatrix} T_1^* h_1 \\ T_2^* h_2 - 2iK_2K_1^* h_1 \end{bmatrix} \\ &= \begin{bmatrix} \bar{\lambda}_0 h_1 \\ \bar{\mu}_0 h_2 - 2i\sqrt{(\operatorname{Im} \lambda_0) \cdot (\operatorname{Im} \mu_0)} h_1 \end{bmatrix}, \quad \forall h_1, h_2 \in \mathcal{H}. \end{aligned}$$

In addition to \mathbf{T} we define an operator $\mathbf{K} : \mathbb{C} \rightarrow \mathcal{H} \oplus \mathcal{H}$ as

$$(32) \quad \mathbf{K} c = \begin{bmatrix} K_1 c \\ K_2 c \end{bmatrix} = \begin{bmatrix} (\sqrt{\operatorname{Im} \lambda_0} c) h_0 \\ (\sqrt{\operatorname{Im} \mu_0} c) h_0 \end{bmatrix}.$$

In this case the adjoint operator $\mathbf{K}^* : \mathcal{H} \oplus \mathcal{H} \rightarrow \mathbb{C}$ is defined for all $h_1, h_2 \in \mathcal{H}$ as follows

$$(33) \quad \mathbf{K}^* \begin{bmatrix} h_1 \\ h_2 \end{bmatrix} = K_1^* h_1 + K_2^* h_2 = (h_1, \sqrt{\operatorname{Im} \lambda_0} h_0) + (h_2, \sqrt{\operatorname{Im} \mu_0} h_0).$$

One can confirm that

$$(34) \quad \begin{aligned} \operatorname{Im} \mathbf{T} \begin{bmatrix} h_1 \\ h_2 \end{bmatrix} &= \frac{1}{2i} \begin{pmatrix} 2i \operatorname{Im} T_1 & 2iK_1K_2^* \\ 2iK_2K_1^* & 2i \operatorname{Im} T_2 \end{pmatrix} \begin{bmatrix} h_1 \\ h_2 \end{bmatrix} \\ &= \begin{bmatrix} K_1K_1^* h_1 + K_1K_2^* h_2 \\ K_2K_2^* h_2 + K_2K_1^* h_1 \end{bmatrix} = \mathbf{K} \mathbf{K}^* \begin{bmatrix} h_1 \\ h_2 \end{bmatrix}, \end{aligned}$$

and hence $\operatorname{Im} \mathbf{T} = \mathbf{K} \mathbf{K}^*$.

Summarizing, we arrive at the following definition.

DEFINITION 3. Given two systems of the form (27)

$$\Theta_1 = \begin{pmatrix} T_1 & K_1 & 1 \\ \mathcal{H} & & \mathbb{C} \end{pmatrix} \quad \text{and} \quad \Theta_2 = \begin{pmatrix} T_2 & K_2 & 1 \\ \mathcal{H} & & \mathbb{C} \end{pmatrix},$$

define the **coupling of two L-systems** as

$$\Theta = \begin{pmatrix} \mathbf{T} & \mathbf{K} & 1 \\ \mathcal{H} \oplus \mathcal{H} & & \mathbb{C} \end{pmatrix},$$

where the operators \mathbf{T} and \mathbf{K} are presented in (30)–(33).

In writing,

$$\Theta = \Theta_1 \cdot \Theta_2.$$

The following theorem can be derived from a more general result [8, Theorem 3.1], however, for the convenience of the reader, we provide a simple proof of it.

THEOREM 4 (cf. [8]). Let an L-system Θ be the coupling of two L-systems Θ_1 and Θ_2 of the form (27) with the main operators T_1 and T_2 given by (26). Then if $z \in \rho(T_1) \cap \rho(T_2) = \mathbb{C} \setminus \{\lambda_0, \mu_0\}$, we have

$$(35) \quad W_\Theta(z) = W_{\Theta_1}(z) \cdot W_{\Theta_2}(z) = \frac{\bar{\lambda}_0 - z}{\lambda_0 - z} \cdot \frac{\bar{\mu}_0 - z}{\mu_0 - z}.$$

PROOF. We are going to find the transfer function of the coupling Θ based on its definition (5) and then show that it equals the right hand side of (35). Using (30) and elementary calculations one finds

$$(36) \quad \begin{aligned} (\mathbf{T} - zI)^{-1} &= \begin{pmatrix} \lambda_0 - z & 2i\sqrt{\operatorname{Im} \lambda_0 \cdot \operatorname{Im} \mu_0} \\ 0 & \mu_0 - z \end{pmatrix}^{-1} \\ &= \frac{1}{(\lambda_0 - z)(\mu_0 - z)} \begin{pmatrix} \mu_0 - z & -2i\sqrt{\operatorname{Im} \lambda_0 \cdot \operatorname{Im} \mu_0} \\ 0 & \lambda_0 - z \end{pmatrix}. \end{aligned}$$

Taking in to account that

$$2i\sqrt{\operatorname{Im} \lambda_0 \cdot \operatorname{Im} \mu_0} = \sqrt{(\lambda_0 - \bar{\lambda}_0)(\mu_0 - \bar{\mu}_0)},$$

we use (32), (33) with (36) and proceed to find

$$\begin{aligned} 2i\mathbf{K}^*(\mathbf{T} - zI)^{-1}\mathbf{K} &= \frac{2i((\mu_0 - z)\operatorname{Im} \lambda_0 - 2i\operatorname{Im} \lambda_0 \operatorname{Im} \mu_0 + (\lambda_0 - z)\operatorname{Im} \mu_0)}{(\lambda_0 - z)(\mu_0 - z)} \\ &= \frac{(\lambda_0 - \bar{\lambda}_0)(\bar{\mu}_0 - z) + (\lambda_0 - z)(\mu_0 - \bar{\mu}_0)}{(\lambda_0 - z)(\mu_0 - z)}. \end{aligned}$$

Finally,

$$\begin{aligned} W_\Theta(z) &= 1 - 2i\mathbf{K}^*(\mathbf{T} - zI)^{-1}\mathbf{K} = 1 - \frac{(\lambda_0 - \bar{\lambda}_0)(\bar{\mu}_0 - z) + (\lambda_0 - z)(\mu_0 - \bar{\mu}_0)}{(\lambda_0 - z)(\mu_0 - z)} \\ &= \frac{(\lambda_0 - z)(\mu_0 - z) - (\lambda_0 - \bar{\lambda}_0)(\bar{\mu}_0 - z) - (\lambda_0 - z)(\mu_0 - \bar{\mu}_0)}{(\lambda_0 - z)(\mu_0 - z)} \\ &= \frac{(\bar{\lambda}_0 - z)(\bar{\mu}_0 - z)}{(\lambda_0 - z)(\mu_0 - z)} = \frac{\bar{\lambda}_0 - z}{\lambda_0 - z} \cdot \frac{\bar{\mu}_0 - z}{\mu_0 - z} = W_{\Theta_1}(z) \cdot W_{\Theta_2}(z), \end{aligned}$$

completing the proof. \square

The corresponding impedance function $V_\Theta(z)$ of the coupling Θ can be found using (7) as follows.

$$\begin{aligned}
V_\Theta(z) &= i \frac{W_\Theta(z) - 1}{W_\Theta(z) + 1} = i \frac{\frac{\bar{\lambda}_0 - z}{\lambda_0 - z} \cdot \frac{\bar{\mu}_0 - z}{\mu_0 - z} - 1}{\frac{\bar{\lambda}_0 - z}{\lambda_0 - z} \cdot \frac{\bar{\mu}_0 - z}{\mu_0 - z} + 1} = i \frac{(\bar{\lambda}_0 - z)(\bar{\mu}_0 - z) - (\lambda_0 - z)(\mu_0 - z)}{(\bar{\lambda}_0 - z)(\bar{\mu}_0 - z) + (\lambda_0 - z)(\mu_0 - z)} \\
&= i \frac{\bar{\lambda}_0 \bar{\mu}_0 - \bar{\lambda}_0 z - \bar{\mu}_0 z + z^2 - \lambda_0 \mu_0 + \lambda_0 z + \mu_0 z - z^2}{\bar{\lambda}_0 \bar{\mu}_0 - \bar{\lambda}_0 z - \bar{\mu}_0 z + z^2 + \lambda_0 \mu_0 - \lambda_0 z - \mu_0 z + z^2} \\
&= i \frac{(\bar{\lambda}_0 \bar{\mu}_0 - \lambda_0 \mu_0) + (\lambda_0 - \bar{\lambda}_0)z - (\mu_0 - \bar{\mu}_0)z}{(\bar{\lambda}_0 \bar{\mu}_0 + \lambda_0 \mu_0) - (\lambda_0 + \bar{\lambda}_0)z - (\mu_0 + \bar{\mu}_0)z + 2z^2} \\
&= i \frac{-2i \operatorname{Im}(\lambda_0 \mu_0) + 2i(\operatorname{Im} \lambda_0)z + 2i(\operatorname{Im} \mu_0)z}{2\operatorname{Re}(\lambda_0 \mu_0) - 2(\operatorname{Re} \lambda_0)z - 2(\operatorname{Re} \mu_0)z + 2z^2} \\
&= \frac{\operatorname{Im}(\lambda_0 \mu_0) - (\operatorname{Im} \lambda_0 + \operatorname{Im} \mu_0)z}{\operatorname{Re}(\lambda_0 \mu_0) - (\operatorname{Re} \lambda_0 + \operatorname{Re} \mu_0)z + z^2} = \frac{-\operatorname{Im}(\lambda_0 \mu_0) + \operatorname{Im}(\lambda_0 + \mu_0)z}{-\operatorname{Re}(\lambda_0 \mu_0) + \operatorname{Re}(\lambda_0 + \mu_0)z - z^2},
\end{aligned}$$

or

$$(37) \quad V_\Theta(z) = \frac{\operatorname{Im}(\lambda_0 + \mu_0)z - \operatorname{Im}(\lambda_0 \mu_0)}{\operatorname{Re}(\lambda_0 + \mu_0)z - \operatorname{Re}(\lambda_0 \mu_0) - z^2}.$$

Now we will take one step further and show that the impedance function of the coupling of two L-systems whose individual impedances belong to bounded Donoghue classes also belongs to such a class.

THEOREM 5 (cf. [6], [14]). *Let an L-system Θ be the coupling of two L-systems Θ_1 and Θ_2 of the form (27) with the main operators T_1 and T_2 given by (26). Let also $V_{\Theta_1}(z) \in \widehat{\mathfrak{M}}_{\kappa_1}$ and $V_{\Theta_2}(z) \in \widehat{\mathfrak{M}}_{\kappa_2}$. Then the impedance function of the coupling $V_\Theta(z)$ is given by (37) belongs to the class $\widehat{\mathfrak{M}}_\kappa$ with*

$$(38) \quad \kappa = \kappa_1 \cdot \kappa_2.$$

PROOF. Since the membership $V_{\Theta_j}(z) \in \widehat{\mathfrak{M}}_{\kappa_j}$, $j = 1, 2$ ensures that

$$V_{\Theta_j}(i) = ia_j \quad \text{for some } 1 < a_j < 1, \quad j = 1, 2,$$

with

$$\frac{1 + a_j}{1 - a_j} = \frac{1}{\kappa_j}, \quad j = 1, 2,$$

for the transfer functions $W_{\Theta_j}(z)$ of the systems Θ_j , $j = 1, 2$ we have

$$W_{\Theta_j}(i) = \frac{1 - iV_{\Theta_j}(i)}{1 + iV_{\Theta_j}(i)} = \frac{1 + a_j}{1 - a_j} = \frac{1}{\kappa_j}, \quad j = 1, 2.$$

Now (38) is an immediate consequence of the multiplication Theorem 4:

$$\kappa_1 \cdot \kappa_2 = \frac{1}{W_{\Theta_1}(i)} \cdot \frac{1}{W_{\Theta_2}(i)} = \frac{1}{W_\Theta(i)} = \kappa.$$

□

REMARK 6. *Alternatively one can argue as follows. We have shown in Theorem 2, that the requirement that $V_{\Theta_1}(z) \in \widehat{\mathfrak{M}}_{\kappa_1}$ and $V_{\Theta_2}(z) \in \widehat{\mathfrak{M}}_{\kappa_2}$ is equivalent to $\lambda_0 = a_1 i$ and $\mu_0 = a_2 i$ for some $0 < a_1 < 1$ and $0 < a_2 < 1$. It has been already shown above that $V_\Theta(z)$ is given by (37) and hence*

$$V_\Theta(i) = \frac{\operatorname{Im}(a_1 i + a_2 i)i - \operatorname{Im}(-a_1 a_2)}{\operatorname{Re}(a_1 i + a_2 i)i - \operatorname{Re}(-a_1 a_2) + 1} = \frac{a_1 + a_2}{1 + a_1 a_2} i = ai,$$

where

$$a = \frac{a_1 + a_2}{1 + a_1 a_2}.$$

Applying Theorem 2 again we conclude that $V_\Theta(z)$ belongs to one of the bounded Donoghue classes. All that remains is to find the value of corresponding parameter κ . Since $0 < a_1 < 1$ and $0 < a_2 < 1$ implies $\frac{a_1 + a_2}{1 + a_1 a_2} < 1$, we apply (14) to get

$$\kappa = \frac{1 - a}{1 + a} = \frac{1 - \frac{a_1 + a_2}{1 + a_1 a_2}}{1 + \frac{a_1 + a_2}{1 + a_1 a_2}} = \frac{1 + a_1 a_2 - a_1 - a_2}{1 + a_1 a_2 + a_1 + a_2} = \frac{(1 - a_1)(1 - a_2)}{(1 + a_1)(1 + a_2)} = \kappa_1 \cdot \kappa_2.$$

Analogous results take place for $V_{\Theta_1}(z) \in \widehat{\mathfrak{M}_{\kappa_1}^{-1}}$ and $V_{\Theta_2}(z) \in \widehat{\mathfrak{M}_{\kappa_2}^{-1}}$ as well as if both $V_{\Theta_1}(z), V_{\Theta_2}(z) \in \widehat{\mathfrak{M}}$.

The obtained result is useful to compare with the multiplicativity of the von Neumann parameters obtained in [14, Theorem 5.4] when discussing the coupling of unbounded dissipative operators.

6. c-Entropy and dissipation coefficient of an L-system

In this section we are going to evaluate the c-entropy and dissipation coefficient of an L-system with multiplication operator.

We begin with reminding the definition of the c-entropy of an L-system introduced in [4].

DEFINITION 7. Let Θ be an L-system of the form (20). The quantity

$$(39) \quad \mathcal{S} = -\ln(|W_\Theta(-i)|),$$

where $W_\Theta(z)$ is the transfer function of Θ , is called the **coupling entropy** (or **c-entropy**) of the L-system Θ .

Note that if, in addition, the point $z = i$ belongs to $\rho(T)$, then we also have that

$$(40) \quad \mathcal{S} = \ln(|W_\Theta(i)|).$$

The c-entropy of an L-system of the form (20) with multiplication operator (16) can explicitly be evaluated as follows.

THEOREM 8. Let Θ be an L-system of the form (20) that is based upon multiplication operator (16). Then the c-entropy \mathcal{S} of Θ is

$$(41) \quad \mathcal{S} = \frac{1}{2} \ln \frac{(\operatorname{Re} \lambda_0)^2 + (1 + \operatorname{Im} \lambda_0)^2}{(\operatorname{Re} \lambda_0)^2 + (1 - \operatorname{Im} \lambda_0)^2}.$$

PROOF. Our plan is to find \mathcal{S} by the definition using (39). Utilizing (21) we obtain

$$|W_\Theta(-i)| = \left| \frac{\bar{\lambda}_0 + i}{\lambda_0 + i} \right| = \left| \frac{\operatorname{Re} \lambda_0 + i(1 - \operatorname{Im} \lambda_0)}{\operatorname{Re} \lambda_0 + i(1 + \operatorname{Im} \lambda_0)} \right| = \sqrt{\frac{(\operatorname{Re} \lambda_0)^2 + (1 - \operatorname{Im} \lambda_0)^2}{(\operatorname{Re} \lambda_0)^2 + (1 + \operatorname{Im} \lambda_0)^2}}.$$

Therefore,

$$(42) \quad \begin{aligned} \mathcal{S} &= -\ln(|W_\Theta(-i)|) = -\ln \sqrt{\frac{(\operatorname{Re} \lambda_0)^2 + (1 - \operatorname{Im} \lambda_0)^2}{(\operatorname{Re} \lambda_0)^2 + (1 + \operatorname{Im} \lambda_0)^2}} \\ &= \frac{1}{2} \ln \left(\frac{(\operatorname{Re} \lambda_0)^2 + (1 + \operatorname{Im} \lambda_0)^2}{(\operatorname{Re} \lambda_0)^2 + (1 - \operatorname{Im} \lambda_0)^2} \right). \end{aligned}$$

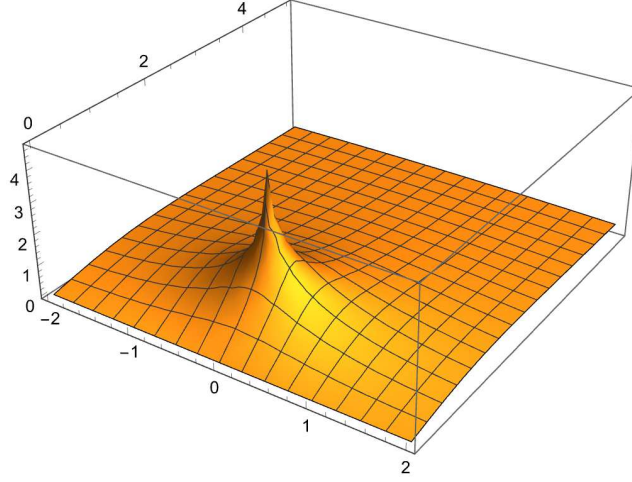


FIGURE 2. Maximal c-Entropy

The proof is complete. \square

REMARK 9. As it follows from Theorems 2, 8, and formula (41), an L-system of the form (20) achieves its infinite c-entropy if and only if $\lambda_0 = i$. Recall that a finite L-system's c-entropy attains its maximum whenever its impedance function $V_\Theta(z)$ belongs to one of the generalized Donoghue classes [2]. That is, $V_\Theta(i)$ is purely imaginary. In the current setting, according to (23), $\operatorname{Re}(V_\Theta(i))$ vanishes if and only if $\operatorname{Re} \lambda_0 = 0$. Therefore, c-entropy of an L-system of the form (20) attains its maximum (finite) value whenever $\lambda_0 = ai$, for $a \in (0, 1) \cup (1, +\infty)$.

The graph of c-entropy $\mathcal{S}(x, y)$ as a function of $x = \operatorname{Re} \lambda_0$ and $y = \operatorname{Im} \lambda_0$ is shown on Figure 2. The visible pick is actually represents the infinite value of $\mathcal{S}(x, y)$ that occurs at the point $(0, 1)$ when $\lambda_0 = i$.

Let us recall the definition of the dissipation coefficient of an L-system.

DEFINITION 10 (cf. [4], [3]). Let Θ be an L-system of the form (20) with c-entropy \mathcal{S} . Then the quantity

$$(43) \quad \mathcal{D} = 1 - e^{-2\mathcal{S}}$$

is called the **coefficient of dissipation** (or dissipation coefficient) of the L-system Θ .

THEOREM 11. Let Θ be an L-system of the form (20) with multiplication operator (16). Then the dissipation coefficient \mathcal{D} of Θ is

$$(44) \quad \mathcal{D} = \frac{4 \operatorname{Im} \lambda_0}{(\operatorname{Re} \lambda_0)^2 + (1 + \operatorname{Im} \lambda_0)^2}.$$

PROOF. In order to simplify calculations let us denote $\lambda_0 = a + bi$. Using (43) with the middle part of (42) we get

$$\begin{aligned}\mathcal{D} &= 1 - e^{-2\mathcal{S}} = 1 - \left| \frac{\bar{\lambda}_0 + i}{\lambda_0 + i} \right|^2 = 1 - \frac{(\operatorname{Re} \lambda_0)^2 + (1 - \operatorname{Im} \lambda_0)^2}{(\operatorname{Re} \lambda_0)^2 + (1 + \operatorname{Im} \lambda_0)^2} \\ &= 1 - \frac{a^2 + (1 - b)^2}{a^2 + (1 + b)^2} = \frac{a^2 + (1 + b)^2 - a^2 - (1 - b)^2}{a^2 + (1 + b)^2} = \frac{4b}{a^2 + (1 + b)^2}.\end{aligned}$$

Thus, (44) takes place. \square

Now, we turn our attention to the c-entropy of L-system coupling, as described in Section 5. The following theorem establishes the additivity property of c-Entropy with respect to the coupling of two L-systems, thereby justifying the use of the term “coupling entropy.”

THEOREM 12. *Let an L-system Θ be the coupling of two L-systems Θ_1 and Θ_2 of the form (27) with the corresponding c-entropies \mathcal{S}_1 and \mathcal{S}_2 . Then the c-entropy \mathcal{S} of Θ is such that*

$$(45) \quad \mathcal{S} = \mathcal{S}_1 + \mathcal{S}_2.$$

If either $\mathcal{S}_1 = \infty$ or $\mathcal{S}_2 = \infty$, then $\mathcal{S} = \infty$.

PROOF. We rely on the Definition 7 of c-entropy and Theorem 4. Applying (39) with (35) yields

$$\begin{aligned}\mathcal{S} &= -\ln(|W_\Theta(-i)|) = -\ln(|W_{\Theta_1}(-i) \cdot W_{\Theta_2}(-i)|) \\ &= -\ln(|W_{\Theta_1}(-i)|) - \ln(|W_{\Theta_2}(-i)|) = \mathcal{S}_1 + \mathcal{S}_2.\end{aligned}$$

\square

It follows directly from Theorem 11 and formulas (41)-(42) that the c-entropy of the coupling of two L-systems Θ_1 and Θ_2 of the form (27) can be written in terms of the defining numbers λ_0 and μ_0 as follows.

$$\begin{aligned}(46) \quad \mathcal{S} &= \frac{1}{2} \ln \left(\frac{(\operatorname{Re} \lambda_0)^2 + (1 + \operatorname{Im} \lambda_0)^2}{(\operatorname{Re} \lambda_0)^2 + (1 - \operatorname{Im} \lambda_0)^2} \right) + \frac{1}{2} \ln \left(\frac{(\operatorname{Re} \mu_0)^2 + (1 + \operatorname{Im} \mu_0)^2}{(\operatorname{Re} \mu_0)^2 + (1 - \operatorname{Im} \mu_0)^2} \right) \\ &= \frac{1}{2} \ln \left(\frac{(\operatorname{Re} \lambda_0)^2 + (1 + \operatorname{Im} \lambda_0)^2}{(\operatorname{Re} \lambda_0)^2 + (1 - \operatorname{Im} \lambda_0)^2} \cdot \frac{(\operatorname{Re} \mu_0)^2 + (1 + \operatorname{Im} \mu_0)^2}{(\operatorname{Re} \mu_0)^2 + (1 - \operatorname{Im} \mu_0)^2} \right).\end{aligned}$$

Now we are going to look into the dissipation coefficient of the coupling of two L-systems of the form (27). In [3] we made a note that if L-system Θ with c-entropy \mathcal{S} is a coupling of two L-systems Θ_1 and Θ_2 with c-entropies \mathcal{S}_1 and \mathcal{S}_2 , respectively, formula (45) holds, i.e., $\mathcal{S} = \mathcal{S}_1 + \mathcal{S}_2$. Let \mathcal{D} , \mathcal{D}_1 , and \mathcal{D}_2 be the dissipation coefficients of L-systems Θ , Θ_1 , and Θ_2 . Then (43) implies

$$1 - \mathcal{D} = e^{-2\mathcal{S}} = e^{-2(\mathcal{S}_1 + \mathcal{S}_2)} = e^{-2\mathcal{S}_1} \cdot e^{-2\mathcal{S}_2} = (1 - \mathcal{D}_1)(1 - \mathcal{D}_2).$$

Thus, the formula

$$(47) \quad \mathcal{D} = 1 - (1 - \mathcal{D}_1)(1 - \mathcal{D}_2) = \mathcal{D}_1 + \mathcal{D}_2 - \mathcal{D}_1\mathcal{D}_2$$

describes the coefficient of dissipation of the L-system coupling. The following theorem gives the value of the dissipation coefficient of two L-systems of the form (27) in terms of their defining numbers λ_0 and μ_0 .

THEOREM 13. *Let an L-system Θ be the coupling of two L-systems Θ_1 and Θ_2 of the form (27) with the corresponding coefficients of dissipation \mathcal{D}_1 and \mathcal{D}_2 . Then the dissipation coefficient \mathcal{D} of Θ is such that*

$$(48) \quad \mathcal{D} = \frac{4 \operatorname{Im} \lambda_0 (|\mu_0|^2 + 1) + 4 \operatorname{Im} \mu_0 (|\lambda_0|^2 + 1)}{[(\operatorname{Re} \lambda_0)^2 + (1 + \operatorname{Im} \lambda_0)^2][(\operatorname{Re} \mu_0)^2 + (1 + \operatorname{Im} \mu_0)^2]}.$$

PROOF. Applying formula (47) with (44) gives

$$\begin{aligned} \mathcal{D} &= \frac{4 \operatorname{Im} \lambda_0}{(\operatorname{Re} \lambda_0)^2 + (1 + \operatorname{Im} \lambda_0)^2} + \frac{4 \operatorname{Im} \mu_0}{(\operatorname{Re} \mu_0)^2 + (1 + \operatorname{Im} \mu_0)^2} \\ &\quad + \frac{16 \operatorname{Im} \lambda_0 \cdot \operatorname{Im} \mu_0}{[(\operatorname{Re} \lambda_0)^2 + (1 + \operatorname{Im} \lambda_0)^2][(\operatorname{Re} \mu_0)^2 + (1 + \operatorname{Im} \mu_0)^2]} \\ &= \frac{4 \operatorname{Im} \lambda_0 (|\mu_0|^2 + 1) + 4 \operatorname{Im} \mu_0 (|\lambda_0|^2 + 1)}{[(\operatorname{Re} \lambda_0)^2 + (1 + \operatorname{Im} \lambda_0)^2][(\operatorname{Re} \mu_0)^2 + (1 + \operatorname{Im} \mu_0)^2]}. \end{aligned}$$

Thus (48) takes place. \square

7. Skew-adjoint L-system with multiplication operator

Let (as above) \mathcal{H} be a one-dimensional Hilbert space with an inner product (\cdot, \cdot) and a normalized basis vector $h_0 \in \mathcal{H}$, ($\|h_0\| = 1$), and T be a multiplication operator in \mathcal{H} of the form (16). Consider the skew-adjoint to T operator T^\times defined by the formula

$$(49) \quad T^\times h = -\bar{\lambda}_0 h, \quad h \in \mathcal{H}.$$

Clearly, for all $h \in \mathcal{H}$ we have $(Th, h) = -(h, T^\times h)$ and

$$(T^\times)^* h = -Th = -\lambda_0 h, \quad \operatorname{Im} T^\times h = \operatorname{Im} \lambda_0 h, \quad \text{and} \quad \operatorname{Re} T^\times h = -\operatorname{Re} \lambda_0 h.$$

We would like to include T^\times into a L-system Θ^\times of the form (20). Let $K : \mathbb{C} \rightarrow \mathcal{H}$ be of the form (17) with $K^* : \mathcal{H} \rightarrow \mathbb{C}$ given by (18) exactly as described in Section 4. Then,

$$(50) \quad \operatorname{Im} T^\times h = \operatorname{Im} \lambda_0 h = \operatorname{Im} Th = K K^* h, \quad \forall h \in \mathcal{H},$$

and hence T^\times can be included into the L-system

$$(51) \quad \Theta^\times = \begin{pmatrix} T^\times & K & 1 \\ \mathcal{H} & & \mathbb{C} \end{pmatrix},$$

where operators T and K are defined by (49) and (17), respectively. The L-system Θ^\times of the form (51) will be called **skew-adjoint L-system** with respect to an L-system Θ of the form (20).

Repeating the steps described in Section 4, one relies on (21) to obtain

$$(52) \quad W_{\Theta^\times}(z) = I - 2iK^*(T^\times - zI)^{-1}K = \frac{\lambda_0 + z}{\lambda_0 + z}.$$

The corresponding impedance function is easily found and given by

$$(53) \quad V_{\Theta^\times}(z) = K^*(\operatorname{Re} T^\times - zI)^{-1}K = -\frac{\operatorname{Im} \lambda_0}{\operatorname{Re} \lambda_0 + z}.$$

THEOREM 14. *Let an L-system Θ be of the form (20) with the corresponding skew-adjoint L-system Θ^\times of the form (51). Then the c-entropies $\mathcal{S}(\Theta)$ and $\mathcal{S}(\Theta^\times)$ and dissipation coefficients $\mathcal{D}(\Theta)$ and $\mathcal{D}(\Theta^\times)$ of Θ and Θ^\times coincide, respectively.*

PROOF. We are going to find the c-entropy $\mathcal{S}(\Theta^\times)$ by the definition using (39) and (21). We obtain

$$|W_{\Theta^\times}(-i)| = \left| \frac{\lambda_0 - i}{\bar{\lambda}_0 - i} \right| = \left| \frac{\operatorname{Re} \lambda_0 - i(1 - \operatorname{Im} \lambda_0)}{\operatorname{Re} \lambda_0 - i(1 + \operatorname{Im} \lambda_0)} \right| = \sqrt{\frac{(\operatorname{Re} \lambda_0)^2 + (1 - \operatorname{Im} \lambda_0)^2}{(\operatorname{Re} \lambda_0)^2 + (1 + \operatorname{Im} \lambda_0)^2}}.$$

But we have shown in the proof of Theorem 8

$$|W_{\Theta}(-i)| = \left| \frac{\bar{\lambda}_0 + i}{\lambda_0 + i} \right| = \left| \frac{\operatorname{Re} \lambda_0 + i(1 - \operatorname{Im} \lambda_0)}{\operatorname{Re} \lambda_0 + i(1 + \operatorname{Im} \lambda_0)} \right| = \sqrt{\frac{(\operatorname{Re} \lambda_0)^2 + (1 - \operatorname{Im} \lambda_0)^2}{(\operatorname{Re} \lambda_0)^2 + (1 + \operatorname{Im} \lambda_0)^2}}.$$

Thus, $|W_{\Theta}(-i)| = |W_{\Theta^\times}(-i)|$ and, applying the definition of c-entropy (39), one obtains that the c-entropies of both L-systems Θ and Θ^\times match, that is $\mathcal{S}(\Theta) = \mathcal{S}(\Theta^\times)$.

The equality of the dissipation coefficients $\mathcal{D}(\Theta)$ and $\mathcal{D}(\Theta^\times)$ follows immediately from (43). \square

Let us now consider the coupling of the L-systems Θ and Θ^\times . Hence, we are applying Definition 3 to the L-systems of the form (20)

$$\Theta = \begin{pmatrix} T & K & 1 \\ \mathcal{H} & & \mathbb{C} \end{pmatrix} \quad \text{and} \quad \Theta^\times = \begin{pmatrix} T^\times & K & 1 \\ \mathcal{H} & & \mathbb{C} \end{pmatrix},$$

where

$$(54) \quad Th = \lambda_0 h \quad \text{and} \quad T^\times h = -\bar{\lambda}_0 h, \quad h \in \mathcal{H},$$

and where $K : \mathbb{C} \rightarrow \mathcal{H}$ and $K^* : \mathcal{H} \rightarrow \mathbb{C}$ are such that

$$Kc = (\sqrt{\operatorname{Im} \lambda_0} c)h_0 \quad \text{and} \quad K^*h = (h, \sqrt{\operatorname{Im} \lambda_0} h_0), \quad \forall c \in \mathbb{C}.$$

Here $h_0 \in \mathcal{H}$ is normalized basis vector in \mathcal{H} , ($\|h_0\| = 1$). Let

$$\Theta = \Theta \cdot \Theta^\times.$$

Then

$$\Theta = \begin{pmatrix} \mathbf{T} & \mathbf{K} & 1 \\ \mathcal{H} \oplus \mathcal{H} & & \mathbb{C} \end{pmatrix}$$

where \mathbf{T} is of the form (30) and hence, taking into account (54),

$$(55) \quad \begin{aligned} \mathbf{T} \begin{bmatrix} h_1 \\ h_2 \end{bmatrix} &= \begin{pmatrix} T & 2iKK^* \\ 0 & T^\times \end{pmatrix} \begin{bmatrix} h_1 \\ h_2 \end{bmatrix} = \begin{bmatrix} Th_1 + 2iKK^*h_2 \\ T^\times h_2 \end{bmatrix} \\ &= \begin{bmatrix} \lambda_0 h_1 + 2i\sqrt{(\operatorname{Im} \lambda_0)^2} h_2 \\ -\bar{\lambda}_0 h_2 \end{bmatrix} = \begin{bmatrix} \lambda_0 h_1 + (\lambda_0 - \bar{\lambda}_0) h_2 \\ -\bar{\lambda}_0 h_2 \end{bmatrix}, \end{aligned}$$

for all $h_1, h_2 \in \mathcal{H}$. Also, (see (32))

$$(56) \quad \mathbf{K}c = \begin{bmatrix} Kc \\ Kc \end{bmatrix} = \begin{bmatrix} (\sqrt{\operatorname{Im} \lambda_0} c)h_0 \\ (\sqrt{\operatorname{Im} \lambda_0} c)h_0 \end{bmatrix}.$$

The transfer function $W_{\Theta}(z)$ of this coupling can be found using Theorem 4 with formulas (35) and (52)

$$W_{\Theta}(z) = W_{\Theta}(z) \cdot W_{\Theta^\times}(z) = \frac{\bar{\lambda}_0 - z}{\lambda_0 - z} \cdot \frac{\lambda_0 + z}{\bar{\lambda}_0 + z} = \frac{|\lambda_0|^2 - (\lambda_0 - \bar{\lambda}_0)z - z^2}{|\lambda_0|^2 + (\lambda_0 - \bar{\lambda}_0)z - z^2}$$

or

$$(57) \quad W_{\Theta}(z) = \frac{|\lambda_0|^2 - 2i(\operatorname{Im} \lambda_0)z - z^2}{|\lambda_0|^2 + 2i(\operatorname{Im} \lambda_0)z - z^2}.$$

The impedance function $V_{\Theta}(z)$ of this coupling can be found using (7). We have

$$\begin{aligned} V_{\Theta}(z) &= i \frac{W_{\Theta}(z) - 1}{W_{\Theta}(z) + 1} = i \frac{\frac{|\lambda_0|^2 - 2i(\operatorname{Im} \lambda_0)z - z^2}{|\lambda_0|^2 + 2i(\operatorname{Im} \lambda_0)z - z^2} - 1}{\frac{|\lambda_0|^2 - 2i(\operatorname{Im} \lambda_0)z - z^2}{|\lambda_0|^2 + 2i(\operatorname{Im} \lambda_0)z - z^2} + 1} \\ &= i \frac{|\lambda_0|^2 - 2i(\operatorname{Im} \lambda_0)z - z^2 - |\lambda_0|^2 - 2i(\operatorname{Im} \lambda_0)z + z^2}{|\lambda_0|^2 - 2i(\operatorname{Im} \lambda_0)z - z^2 + |\lambda_0|^2 + 2i(\operatorname{Im} \lambda_0)z - z^2} = i \frac{-2i(\operatorname{Im} \lambda_0)z}{|\lambda_0|^2 - z^2}, \end{aligned}$$

or

$$(58) \quad V_{\Theta}(z) = \frac{2(\operatorname{Im} \lambda_0)z}{|\lambda_0|^2 - z^2}.$$

In particular,

$$(59) \quad V_{\Theta}(i) = \frac{2(\operatorname{Im} \lambda_0)}{|\lambda_0|^2 + 1} i,$$

and hence the impedance function $V_{\Theta}(z)$ always belongs to one of the bounded Donoghue classes discussed in Section 3. For instance, if $\lambda_0 = i$, then

$$V_{\Theta}(z) \in \widehat{\mathfrak{M}}.$$

REMARK 15. *Taking into account that the impedance function $V_{\Theta}(z)$ for the coupling of two elementary systems Θ and Θ^{\times} is expressed as*

$$V_{\Theta}(z) = \frac{2(\operatorname{Im} \lambda_0)z}{|\lambda_0|^2 - z^2} = \frac{\operatorname{Im} \lambda_0}{|\lambda_0| - z} + \frac{\operatorname{Im} \lambda_0}{(-|\lambda_0|) - z},$$

we can use Remark 1 to draw the following conclusion: the function

$$Z_{\Theta}(p) = \frac{1}{i} V_{\Theta}(ip)$$

coincide with the impedance of the parallel LC-circuit with

$$L = \frac{\operatorname{Im} \lambda_0}{|\lambda_0|^2} = \operatorname{Im} \left(-\frac{1}{\lambda_0} \right) \quad \text{and} \quad C = \frac{1}{\operatorname{Im} \lambda_0},$$

the inductance and capacitance, respectively. The discussion above sheds light on the “internal” structure of the sequential connection of oscillatory LC-circuits mentioned in Remark 1: each element of such a circuit has the impedance of the coupling of two elementary systems.

The following Corollary immediately follows from Theorems 12 and 14.

COROLLARY 16. *Let an L-system Θ be of the form (20) with the c-entropy \mathcal{S} and dissipation coefficient \mathcal{D} . Let also Θ^{\times} be the corresponding to Θ skew-adjoint L-system of the form (51). Then the c-entropy $\mathcal{S}(\Theta)$ of the coupling $\Theta = \Theta \cdot \Theta^{\times}$ is*

$$(60) \quad \mathcal{S}(\Theta) = 2\mathcal{S}.$$

Moreover, the dissipation coefficient $\mathcal{D}(\Theta)$ of this coupling is

$$(61) \quad \mathcal{D}(\Theta) = 2\mathcal{D} - \mathcal{D}^2.$$

Table 2 summarizes the results from Sections 4–7 that relate to c-entropy and dissipation coefficient for the L-systems of the form (20) with $\lambda_0 = x + iy$. In this table we assume that the L-systems Θ , Θ_1 , Θ_2 of the form (20) have c-entropies \mathcal{S} , \mathcal{S}_1 , \mathcal{S}_2 and the dissipation coefficients \mathcal{D} , \mathcal{D}_1 , \mathcal{D}_2 , respectively.

L-system	c-entropy \mathcal{S}	Dissipation coefficient \mathcal{D}	Theorems
Θ	$\ln \sqrt{\frac{x^2+(1+y)^2}{x^2+(1-y)^2}}$	$\frac{4y}{x^2+(1+y)^2}$	Theorems 8 and 11
Θ^\times	$\ln \sqrt{\frac{x^2+(1+y)^2}{x^2+(1-y)^2}}$	$\frac{4y}{x^2+(1+y)^2}$	Theorem 14
$\Theta = \Theta_1 \cdot \Theta_2$	$\mathcal{S} = \mathcal{S}_1 + \mathcal{S}_2$	Formula (48)	Theorems 12 and 13
$\Theta = \Theta \cdot \Theta^\times$	$\mathcal{S}(\Theta) = 2\mathcal{S}$	$\mathcal{D}(\Theta) = 2\mathcal{D} - \mathcal{D}^2$	Corollary 16

TABLE 2. c-Entropy and Dissipation coefficient with $\lambda_0 = x + iy$

8. Examples

In this section we present examples that illustrate the construction of L-system of the form (51) for different values of λ_0 .

Example 1. Let $\lambda_0 = i$ and consider the linear operator T of the form (16) acting on an arbitrary one-dimensional Hilbert space with an inner product (\cdot, \cdot) and a normalized basis vector $h_0 \in \mathcal{H}$, ($\|h_0\| = 1$). Then

$$(62) \quad Th = ih, \quad h \in \mathcal{H}.$$

Clearly,

$$T^*h = (-i)h, \quad \text{Im } Th = h, \quad \text{and} \quad \text{Re } Th = 0h = 0, \quad \forall h \in \mathcal{H}.$$

We are going to include T into an L-system Θ of the form (16). In order to do that we take an operator $K : \mathbb{C} \rightarrow \mathcal{H}$ of the form

$$(63) \quad Kc = ch_0, \quad \forall c \in \mathbb{C}.$$

Then, the adjoint operator $K^* : \mathcal{H} \rightarrow \mathbb{C}$ is

$$(64) \quad K^*h = (h, h_0), \quad \forall h \in \mathcal{H}.$$

Consequently, $KK^*h = h$. We are constructing an L-system of the form (16)

$$(65) \quad \Theta = \begin{pmatrix} T & K & 1 \\ \mathcal{H} & \mathbb{C} & \end{pmatrix},$$

where operators T and K are defined by (62)–(64), respectively. Using (21) we have

$$(66) \quad W_\Theta(z) = I - 2iK^*(T - zI)^{-1}K = \frac{-i - z}{i - z} = \frac{z + i}{z - i}.$$

The corresponding impedance function is easily found using (22)

$$(67) \quad V_{\Theta}(z) = K^*(\operatorname{Re} T - zI)^{-1}K = -\frac{1}{z}.$$

Clearly, $V_{\Theta}(z) \in \widehat{\mathfrak{M}}$. Also, the c-entropy \mathcal{S} of the L-system Θ in (65) is infinity while the dissipation coefficient \mathcal{D} is 1. Moreover, since $i = -\bar{i}$, the skew-adjoint system Θ^{\times} in this case coincides with Θ making it “self-skew-adjoint”.

Example 2. Following the steps of Example 1 we let $\lambda_0 = 1+i$ and consider the linear operator T of the form (16) acting on an arbitrary one-dimensional Hilbert space with an inner product (\cdot, \cdot) and a normalized basis vector $h_0 \in \mathcal{H}$, ($\|h_0\| = 1$). Then

$$(68) \quad Th = (1+i)h, \quad h \in \mathcal{H}.$$

Clearly,

$$T^*h = (1-i)h, \quad \operatorname{Im} Th = h, \quad \text{and} \quad \operatorname{Re} Th = h, \quad \forall h \in \mathcal{H}.$$

We are going to include T into an L-system Θ of the form (16). In order to do that we take an operator $K : \mathbb{C} \rightarrow \mathcal{H}$ of the form

$$(69) \quad Kc = ch_0, \quad \forall c \in \mathbb{C}.$$

Then, the adjoint operator $K^* : \mathcal{H} \rightarrow \mathbb{C}$ is

$$(70) \quad K^*h = (h, h_0), \quad \forall h \in \mathcal{H}.$$

Consequently, $KK^*h = h$. We are constructing an L-system of the form (16)

$$(71) \quad \Theta = \begin{pmatrix} T & K & 1 \\ \mathcal{H} & \mathbb{C} & \end{pmatrix},$$

where operators T and K are defined by (68)–(70), respectively. Using (21) we have

$$(72) \quad W_{\Theta}(z) = I - 2iK^*(T - zI)^{-1}K = \frac{1-i-z}{1+i-z}.$$

The corresponding impedance function is easily found using (22)

$$(73) \quad V_{\Theta}(z) = K^*(\operatorname{Re} T - zI)^{-1}K = \frac{1}{1-z}.$$

The c-entropy \mathcal{S} of the L-system Θ in (71) is found via (39) and (72) as follows

$$(74) \quad \mathcal{S} = -\ln(|W_{\Theta}(-i)|) = -\ln \left| \frac{1}{1+2i} \right| = \ln(\sqrt{5}) = \frac{1}{2} \ln 5.$$

The corresponding coefficient of dissipation \mathcal{D} is (see (43))

$$(75) \quad \mathcal{D} = 1 - e^{-2\mathcal{S}} = 1 - e^{-2(\frac{1}{2} \ln 5)} = 1 - \frac{1}{5} = \frac{4}{5}.$$

Note, that even though the L-systems (65) and (71) share the same value of $\operatorname{Im} \lambda_0$ and (as a result) channel operators K , the c-entropy in Example 2 is finite.

Now let us construct the skew-adjoint system Θ^{\times} . By the definition (49) we have

$$(76) \quad T^{\times}h = -\overline{(1+i)}h = (-1+i)h, \quad h \in \mathcal{H}$$

and the L-system

$$(77) \quad \Theta^\times = \begin{pmatrix} T^\times & K & 1 \\ \mathcal{H} & & \mathbb{C} \end{pmatrix},$$

where K is defined by (69) is skew-adjoint to Θ . Using (52) we have

$$(78) \quad W_{\Theta^\times}(z) = I - 2iK^*(T^\times - zI)^{-1}K = \frac{1+i+z}{1-i+z}.$$

The corresponding impedance function is easily found using (53) and is

$$(79) \quad V_{\Theta^\times}(z) = K^*(\operatorname{Re} T^\times - zI)^{-1}K = -\frac{1}{1+z}.$$

Both L-systems Θ and Θ^\times share c-entropy \mathcal{S} and dissipation coefficient \mathcal{D} values given by (74) and (75), respectively.

References

- [1] Yu. Arlinskii, S. Belyi, E. Tsekanovskii, *Conservative Realizations of Herglotz-Nevanlinna functions*, Oper. Theory Adv. Appl., vol. **217**, Birkhäuser Verlag, 2011. [1](#), [2](#), [3](#), [7](#), [8](#)
- [2] S. Belyi, K. A. Makarov, E. Tsekanovskii, *On c-Entropy optimality of Donoghue classes*, ArXiv <https://arxiv.org/abs/2412.19895>. [12](#)
- [3] S. Belyi, K. A. Makarov, E. Tsekanovskii, *The L-system representation and c-Entropy*, Pure and Applied Functional Analysis, vol. **9** (4), (2024), pp. 935–961. [1](#), [2](#), [6](#), [12](#), [13](#)
- [4] S. Belyi, K. A. Makarov, E. Tsekanovskii, *On the c-Entropy of L-systems with Schrödinger operator*, Complex Analysis and Operator Theory, **16** (107), (2022), 1–59. [2](#), [11](#), [12](#)
- [5] S. Belyi, E. Tsekanovskii, *Perturbations of Donoghue classes and inverse problems for L-systems*, Complex Analysis and Operator Theory, vol. **13** (3), (2019), 1227–1311. [1](#), [4](#)
- [6] S. Belyi, K. A. Makarov, E. Tsekanovskii, *A system coupling and Donoghue classes of Herglotz-Nevanlinna functions*, Complex Analysis and Operator Theory, **10** (4), (2016), 835–880. [1](#), [8](#), [10](#)
- [7] S. Belyi, K. A. Makarov, E. Tsekanovskii, *Conservative L-systems and the Livšic function*. Methods of Functional Analysis and Topology, **21**, no. 2, (2015), 104–133. [1](#), [3](#), [4](#)
- [8] M. Brodskii, *Triangular and Jordan representations of linear operators*. Translations of Mathematical Monographs, Vol. 32. American Mathematical Society, Providence, R.I., 1971. [2](#), [3](#), [5](#), [6](#), [8](#), [9](#)
- [9] W. F. Donoghue, *On perturbation of spectra*, Commun. Pure and Appl. Math., **18**, (1965), 559–579.
- [10] A. V. Efimov, V. P. Potapov, *J-expanding matrix-valued functions, and their role in the analytic theory of electrical circuits*. (Russian) Uspehi Mat. Nauk, **28**, No.1, (169), (1973), 65–130. [5](#)
- [11] F. Gesztesy, E. Tsekanovskii, *On Matrix-Valued Herglotz Functions*. Mathematische Nachrichten, **218**, (2000), 61–138. [3](#)
- [12] M. S. Livšic, *Operators, oscillations, waves*. Moscow, Nauka, 1966. [1](#)
- [13] K. A. Makarov, E. Tsekanovskii, *On the Weyl-Titchmarsh and Livšic functions*. Proceedings of Symposia in Pure Mathematics, vol. **87**, American Mathematical Society, (2013), 291–313.
- [14] K. A. Makarov, E. Tsekanovskii, *On the addition and multiplication theorems*. Oper. Theory Adv. Appl., vol. **244**, (2015), 315–339. [2](#), [4](#), [10](#), [11](#)
- [15] K. A. Makarov, E. Tsekanovskii, *Representations of commutation relations in Dissipative Quantum Mechanics*. ArXiv: 2101.10923 [math-ph]. [4](#)
- [16] K. A. Makarov, E. Tsekanovskii, *The Mathematics of Open Quantum Systems, Dissipative and Non-Unitary Representations and Quantum Measurements*, World Scientific, 2022.

DEPARTMENT OF MATHEMATICS, TROY UNIVERSITY, TROY, AL 36082, USA,
Email address: `sbelyi@troy.edu`

DEPARTMENT OF MATHEMATICS, UNIVERSITY OF MISSOURI, COLUMBIA, MO 63211, USA
Email address: `makarovk@missouri.edu`

DEPARTMENT OF MATHEMATICS, NIAGARA UNIVERSITY, LEWISTON, NY 14109, USA
Email address: `tsekanov@niagara.edu`